

BEST PRACTICE Project Relationships

The software tester is providing a service to those having a vested interest in the success of a software project. What is important about the relationship with the stakeholders are:

- The project relationships are defined.
- The roles of each party and the relationships are defined.
- The importance of the relationship to the success of the project is defined.
- The influence that a party can have on software testing needs to be defined.

An approach used by many organizations to document relationships is a project relationship chart illustrated in Figure 29.

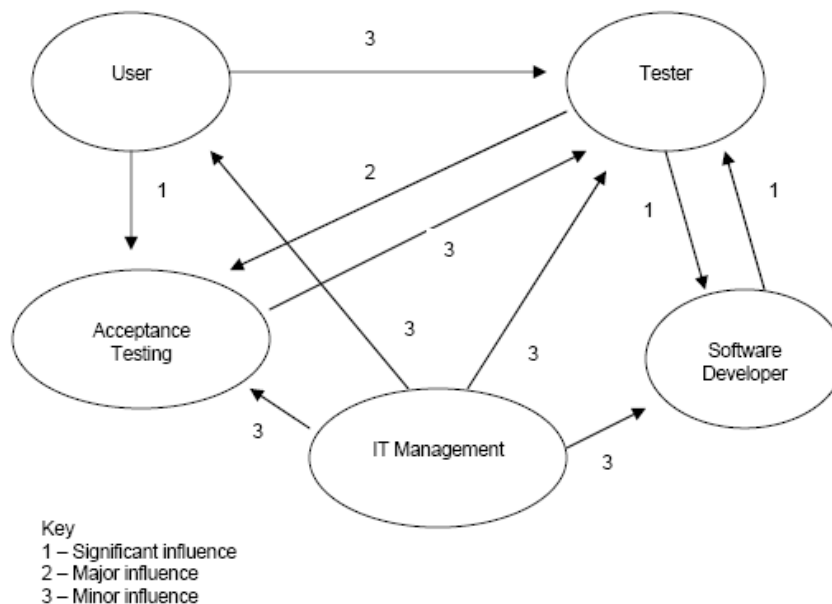


Figure 29. Project Relationship Chart

This chart is an example of a relationship chart and is constructed as follows:



1. Define the stakeholders.

All those individuals who have a stake in the success of the project, and thus must have a relationship to the project need to be defined. In our example, we defined the tester, the user, the software developer, IT management and acceptance testers.

2. Indicate the influence one stakeholder has on another stakeholder.

This chart uses a scale of “1”-to-“3” for influence:

- 1 meaning a stakeholder has a significant influence over another stakeholder
- 2 meaning a major influence, and
- 3 meaning a minor influence.

Note that the lines show the direction of influence and the significance of the influence.

The purpose of this project relationship chart is to be assured that the tester has clearly identified which relationships are important to the success of software testing, and to be assured that the relationships will be developed and maintained during the software testing project.

References

Guide – CSTE Common Body Of Knowledge, V6.1